



State Road (SR) 806/Atlantic Avenue Reconstruction Project

SR 806/Atlantic Avenue, from west of SR 7/US441 to just east of SR 91/Florida's Turnpike, and on SR 7/US 441, from just south of Rio Grande Avenue to just south of Tivoli Isles Boulevard

In Palm Beach County

Financial Project IDs: 229658-4-52-01/02, 229658-4-56-02/03
& 440575-2-52-01/02

Virtual Public Meeting
Tuesday, January 7, 2025

Virtual Public Meeting Orientation

Moderator & Presenter



Melissa Reading
Community Outreach Specialist
The Corradino Group

Meeting Format

Presentation, Q&A Session

- 5 p.m. to 5:30 p.m.
- 5:30 p.m. to 6 p.m.

The Florida Department of Transportation is required to comply with various non-discrimination laws and regulations, including

Title VI of the Civil Rights Act of 1964.

Public participation is solicited without regard to race, color, national origin, age, sex, religion, disability, or family status.

Persons wishing to express concerns about Title VI may do so by contacting either:

District Four

Florida Department of Transportation
District Four Title VI Coordinator

Sharon Singh Hagyan

(954) 777-4190,

Sharon.SinghHagyan@dot.state.fl.us



Tallahassee Office

Florida Department of Transportation
Statewide Title VI Coordinator

Stefan Kulakowski

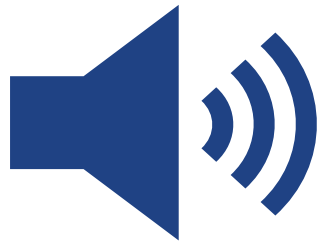
(850) 414-4742,

Stefan.Kulakowski@dot.state.fl.us



All inquiries or concerns will be handled according to FDOT procedure and in a prompt and courteous manner.

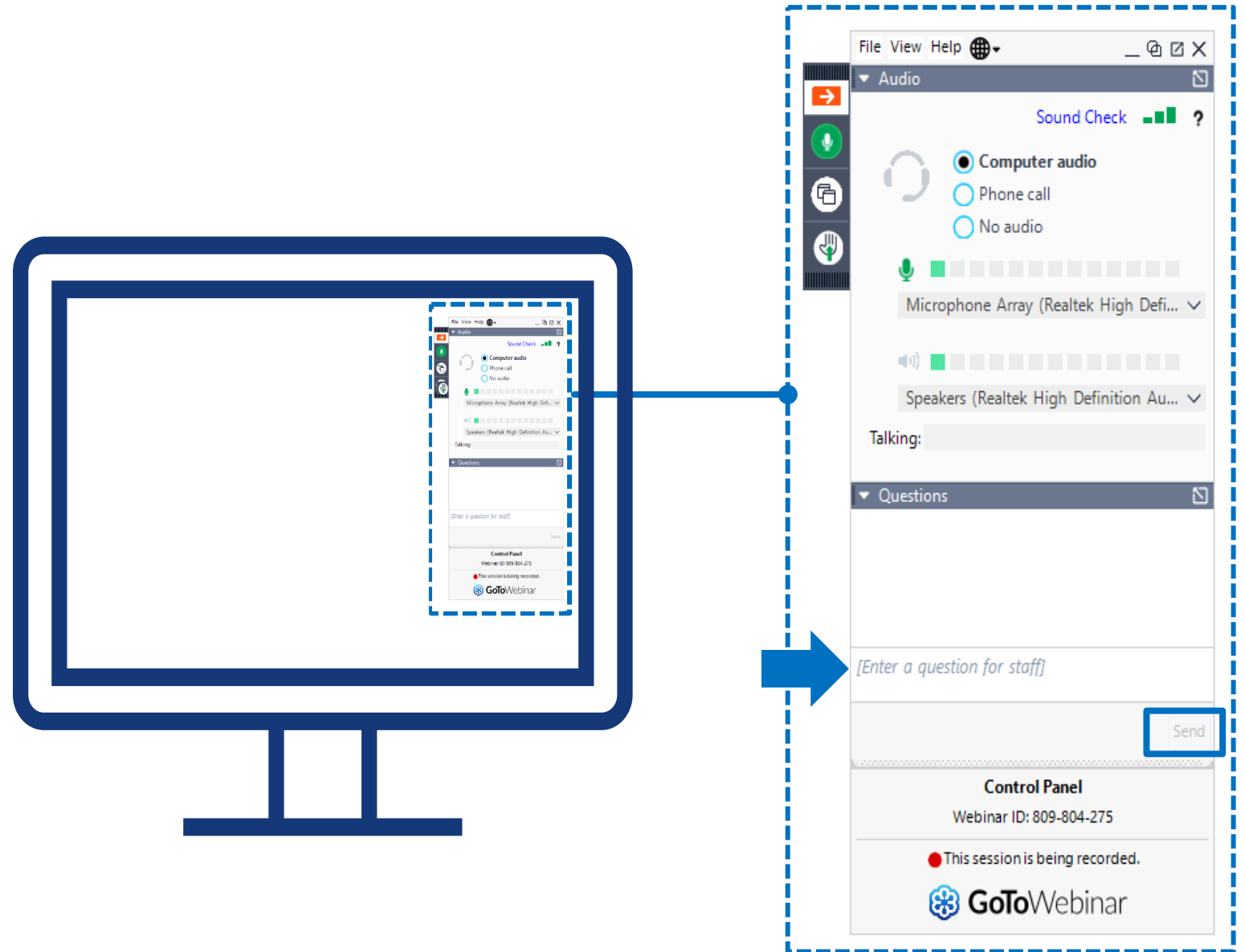
Virtual Public Meeting Orientation



- This Virtual Public Meeting is being recorded.
- All attendees **will remain muted** throughout the meeting.
- If you experience technical difficulties, please contact **GoToWebinar Support at +1(833) 851-8340.**
- At the end of the presentation attendees are also welcome to submit any questions/comments using the GoToWebinar Question Panel and a member of the team will respond during the question-and-answer portion. To request to speak, click the Raise Hand button on the Control Panel and unmute your microphone when your name is called.

Participating on GoTo Webinar

- If you would like to ask a question verbally, please click on the hand icon to be recognized.
- This meeting is being recorded and will be posted to www.d4fdot.com.



Meet the Team



Ricky Estripeaut, P.E.
Construction Project Manager
FDOT District Four
Palm Beach Operations



Thuc Le, P.E.
Design Project Manager
FDOT District Four



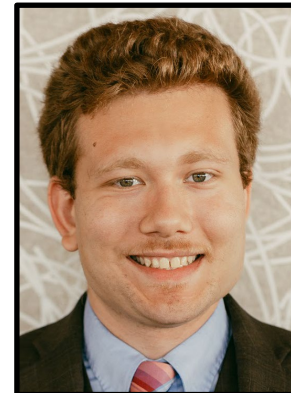
Chris Charvat
Project Administrator
Eisman & Russo, Inc.



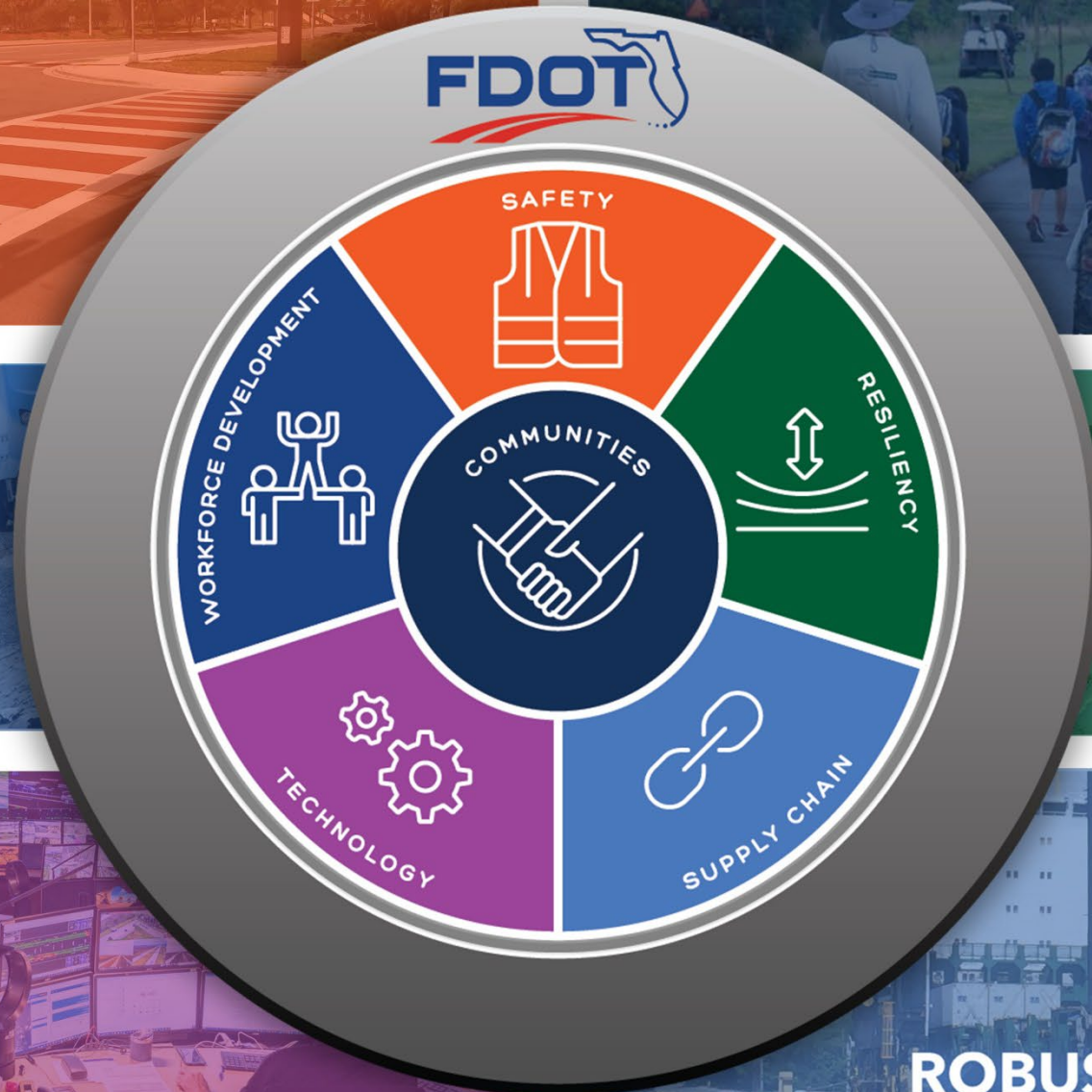
Joseph Martin, P.E.
Engineer of Record
Jacobs Engineering Group, Inc



Ido Shimony, P.E.
Sr. Project Engineer
Eisman & Russo, Inc.



Matthew Uva
Contractor
OHLA-USA, Inc.



2055 Florida Transportation Plan



SINGLE, OVERARCHING PLAN



GUIDES FLORIDA'S TRANSPORTATION FUTURE



FOUNDATION FOR FLORIDA'S WORK PROGRAM

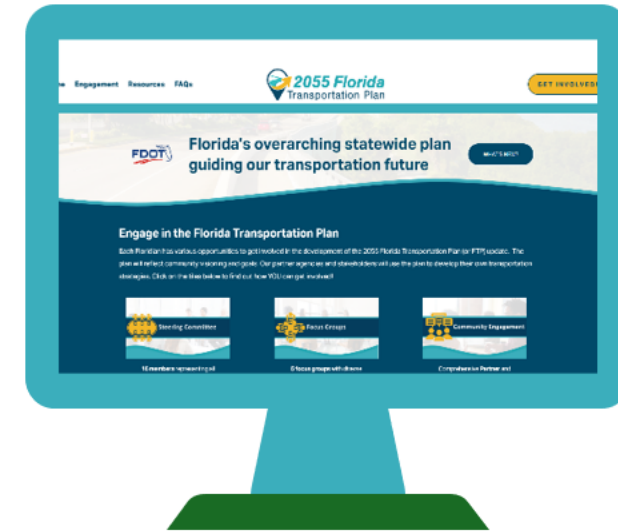


UPDATED EVERY 5 YEARS



COLLABORATIVE EFFORT WITH PUBLIC AND PRIVATE PARTNERS

Upcoming Regional Workshops, Focus Group Meetings, Virtual Statewide Webinars, and more!



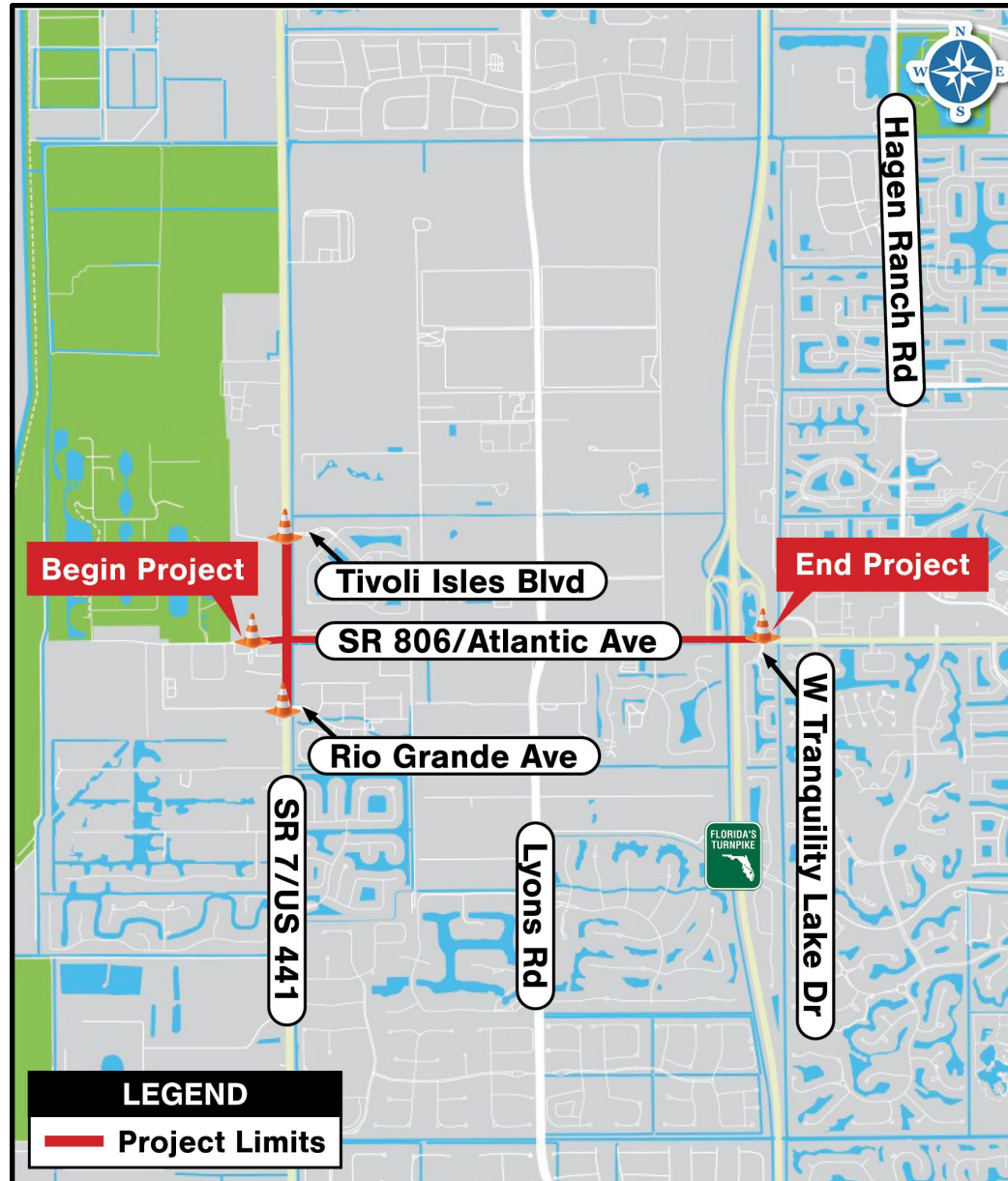
**Scan to
learn more!**



Get Engaged Today!

FloridaFTP.com

Project Limits



Project Overview

Purpose: This project aims to enhance the safety, resiliency, and longevity of our communities' infrastructure.

Length: 2.760 miles (SR 806/Atlantic Avenue)
0.662 miles (SR 7/US 441)

Contractor: OHLA-USA, Inc.

Construction Start: January 2025

Cost: \$26 Million

Estimated Completion: Late 2028



Intersection of SR 806/Atlantic Avenue and SR 7/US
441 facing east
(pre-construction)

Scope of Work

Roadway Improvements

Traffic and Safety Improvements

- Widening SR 806/Atlantic Avenue from west of SR 7/US 441 to west of Lyons Road from 2 to 4 lanes and from west of Lyons Road to east of SR 91/Florida's Turnpike from 4 to 6 lanes to enhance traffic flow and safety
- Expanding the SR 7/US 441 and SR 806/Atlantic Avenue intersection to accommodate a third northbound and southbound through lane, along with a second northbound right turn lane, to improve infrastructure resilience, traffic flow, and safety



Northbound SR 7/US 441 at SR 806/Atlantic Avenue
(pre-construction)

Scope of Work

Roadway Improvements

Intersection Improvements

- Expanding the Lyons Road and SR 806/Atlantic Avenue intersection to accommodate three through lanes, dual left turn lanes, and single right turn lanes in both eastbound and westbound directions to improve infrastructure resilience, traffic flow, and safety
- Expanding the Smith Sundry Road and SR 806/Atlantic Avenue intersection to accommodate a future Palm Beach County project, which will include two lanes in each direction through SR 806/Atlantic Avenue



Northbound Lyons Road facing
eastbound Smith Sundry Road
(pre-construction)

Scope of Work

Infrastructure Improvements

Canal Improvements

- Relocating the Lake Worth Drainage District (LWDD) L-34 canal approximately 60 feet south to accommodate roadway widening, ensuring resilient drainage infrastructure



LWDD L-34 Canal facing east
(pre-construction)

Scope of Work

Pedestrian and Bicyclist Improvements

Sidewalks and Bicycle Lanes

- Constructing continuous 6-foot sidewalks and 7-foot buffered bike lanes in each direction of SR 806/Atlantic Avenue from SR 7/US 441 to east of Lyons Road and an 8-foot sidewalk along westbound SR 806/Atlantic Avenue from east of Lyons Road to the west of SR 91/Florida's Turnpike, to enhance safety and connectivity for pedestrians and cyclists
- Reconfiguring the existing SR 806/Atlantic Avenue bridge over the Lake Worth Drainage District E-1 canal to accommodate an eastbound sidewalk for enhanced pedestrian access



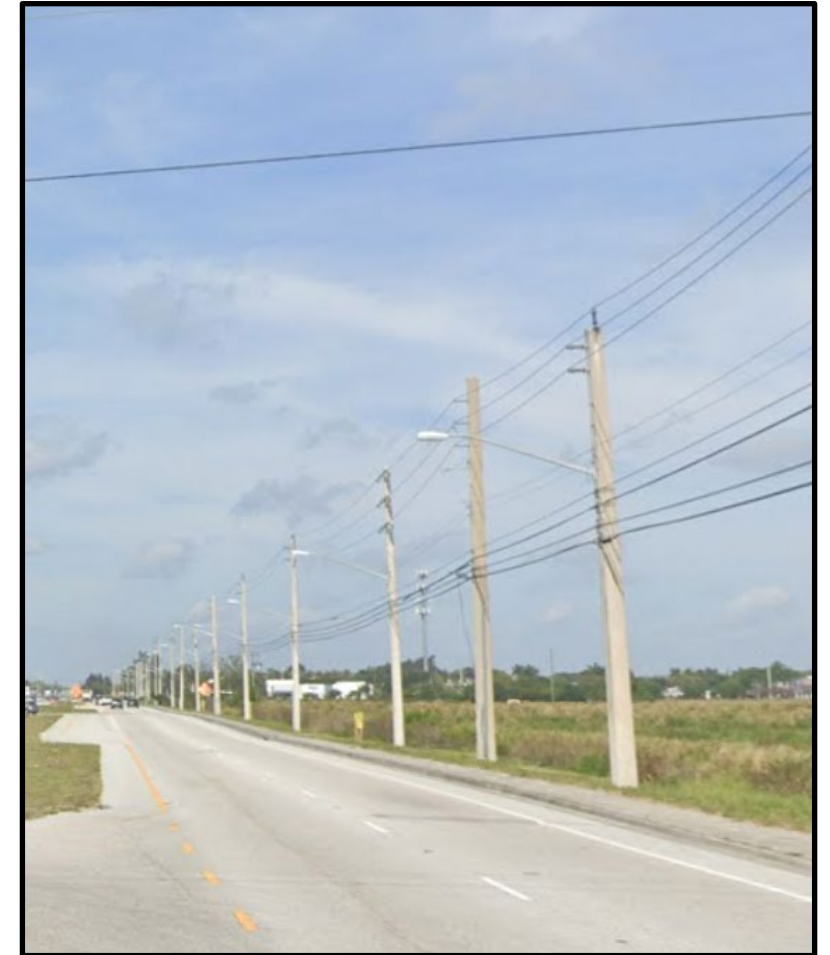
The current sidewalk along the westbound side of SR 806/Atlantic Avenue (pre-construction)

Scope of Work

Safety Improvements

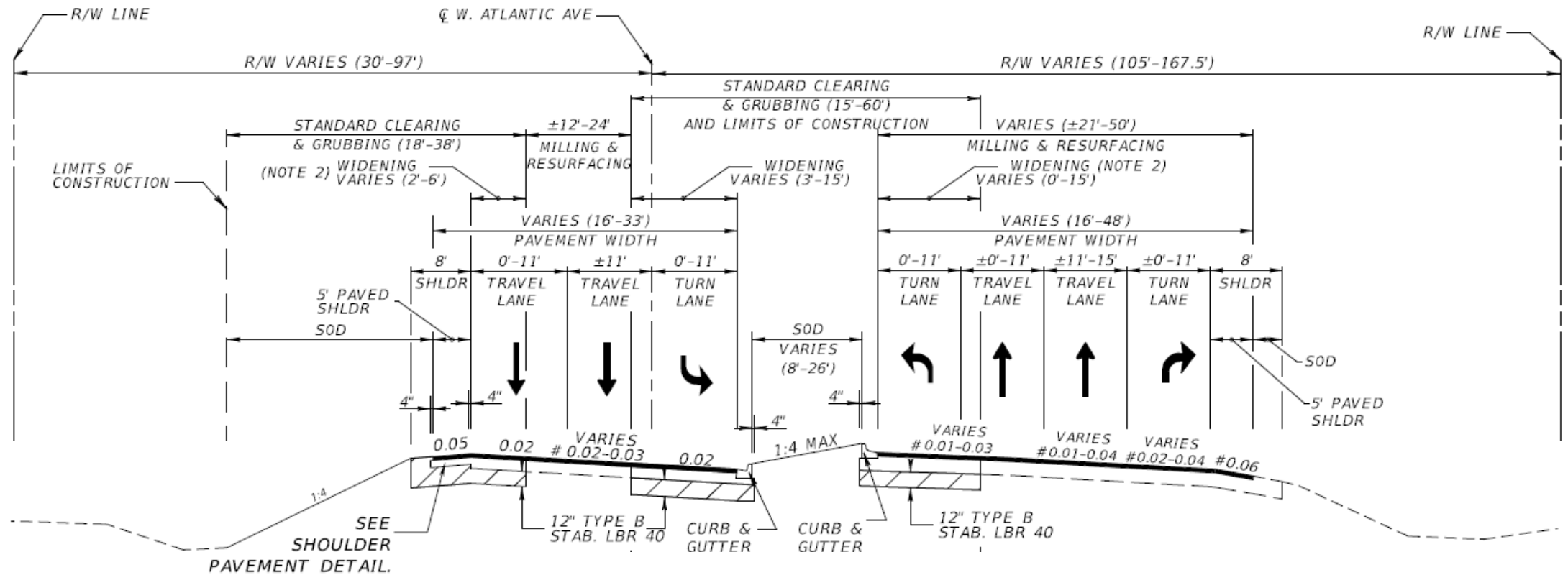
Drainage, Lighting, and Signalization Improvements

- Upgrading drainage, signage, lighting, signalization, and pavement markings throughout the project limits to enhance infrastructure resilience, traffic flow, and safety
- Installing fiber optic cable throughout the project corridor to interconnect traffic signals and enhance real-time communication and safety

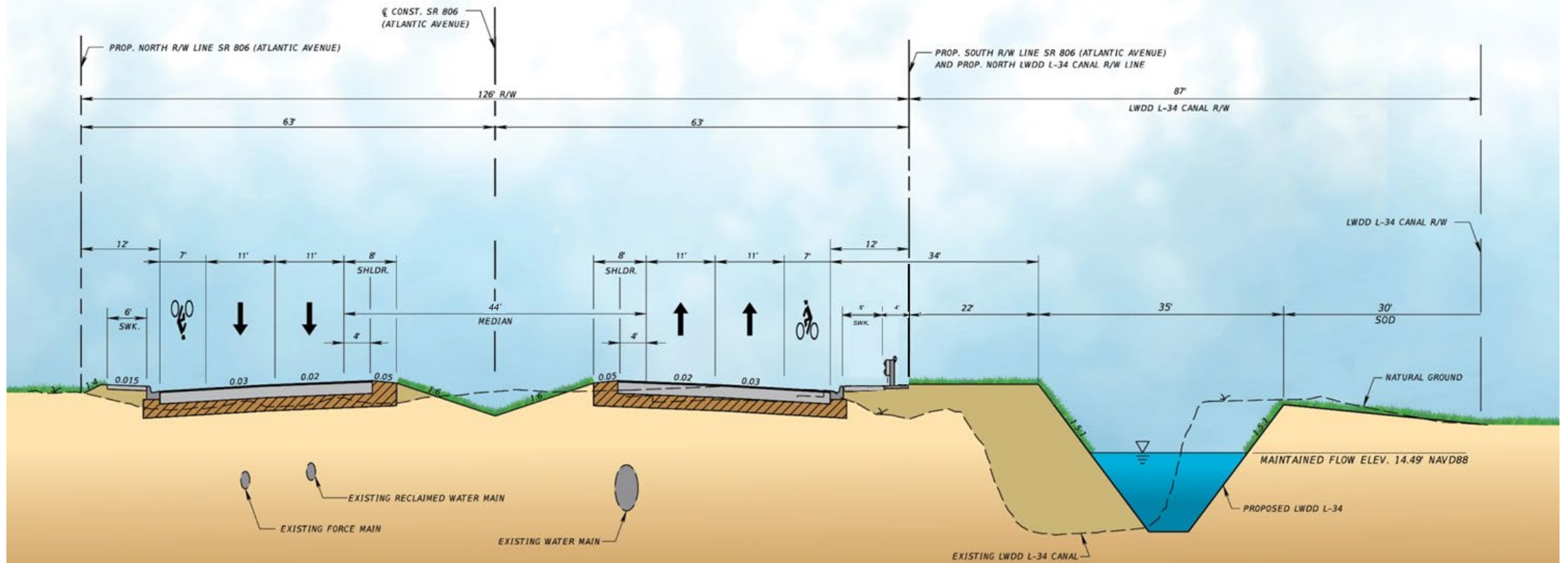


Westbound SR 806/Atlantic Avenue
west of Lyons Road
(pre-construction)

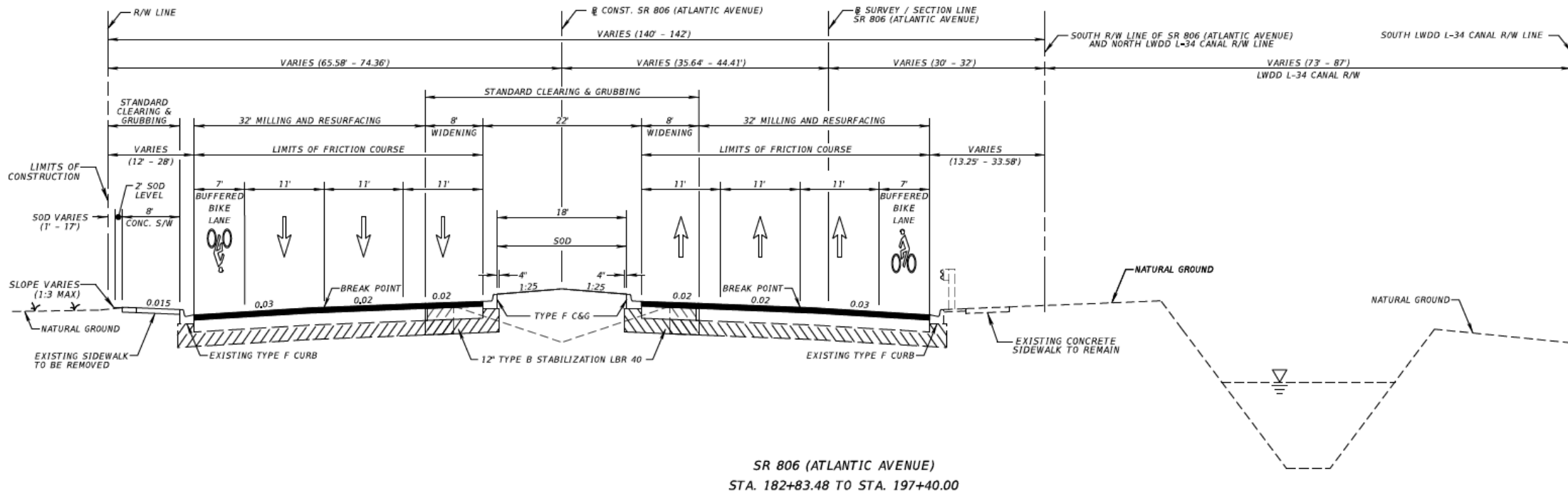
Proposed Typical Section – SR 806/Atlantic Avenue from west of SR 7/US 441 to SR 7/US 441



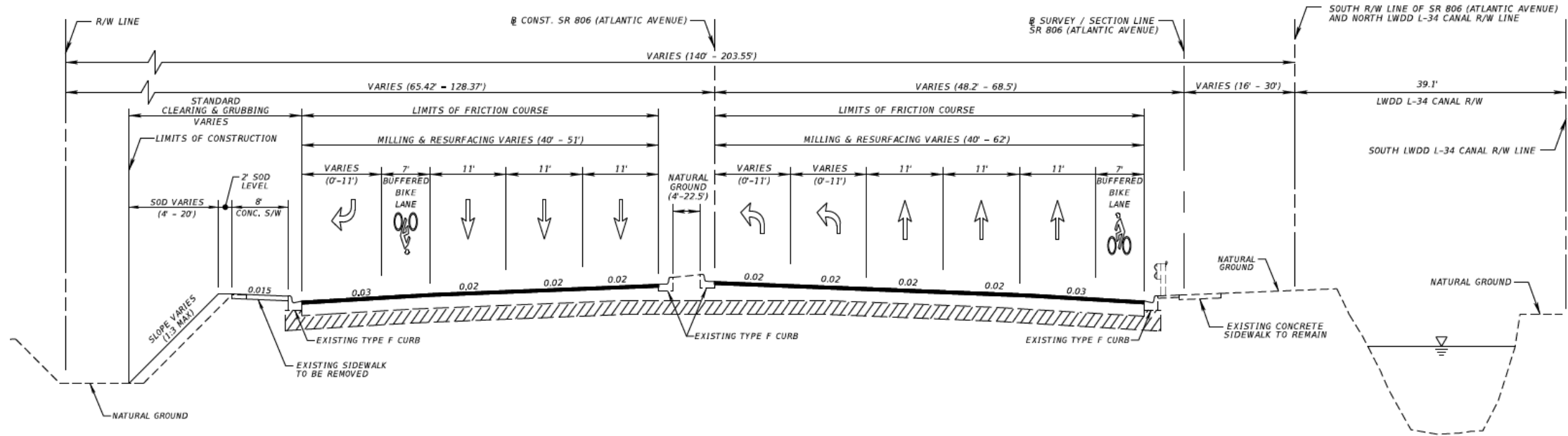
Proposed Typical Section – SR 806/Atlantic Avenue from SR 7/US 441 to just west of Lyons Road



Proposed Typical Section – SR 806/Atlantic Avenue from east of Lyons Road to Persimmon Avenue



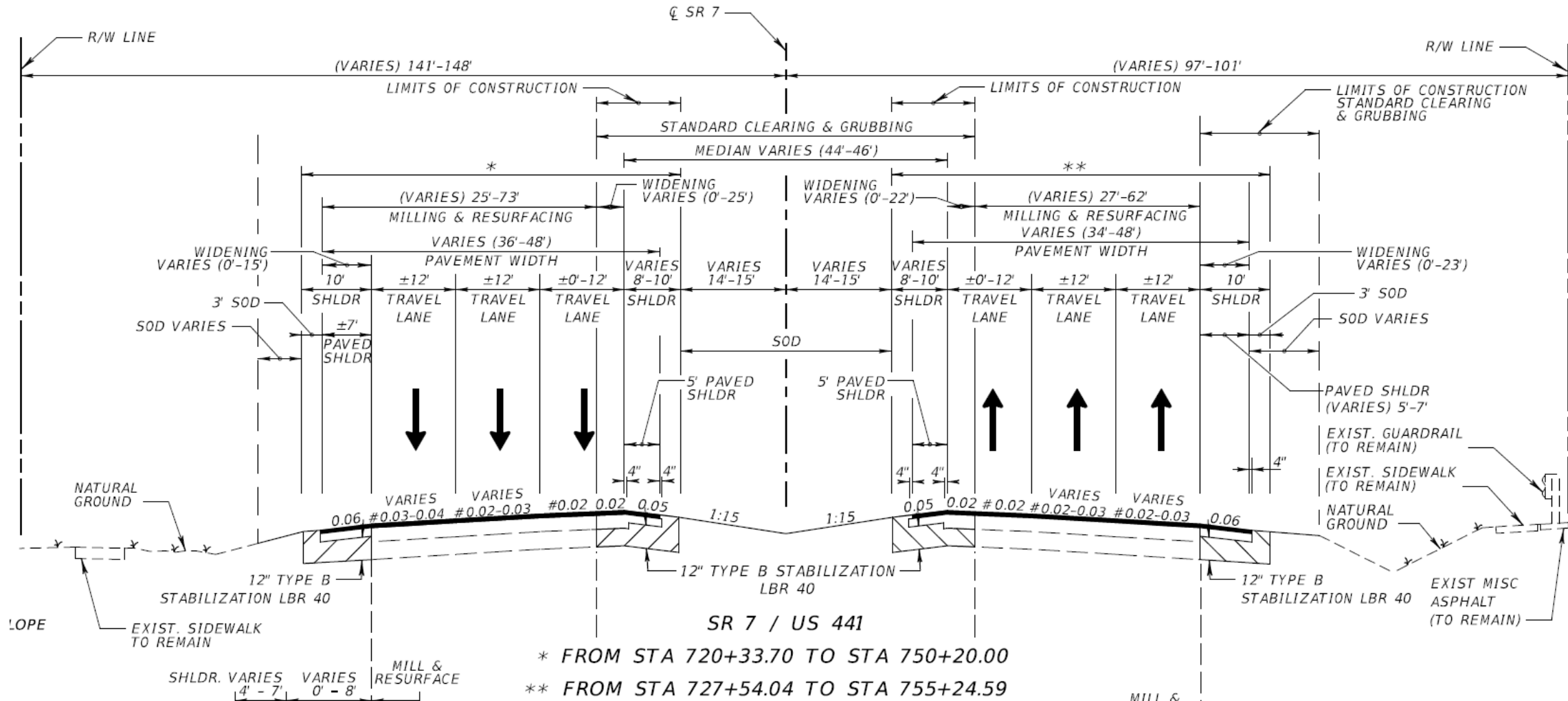
Proposed Typical Section – SR 806/Atlantic Avenue from Persimmon Avenue to east of Florida’s Turnpike



SR 806 (ATLANTIC AVENUE)
STA. 197+40.00 TO STA. 220+21.00

EXISTING TRAVEL LANES
MILL EXISTING ASPHALT PAVEMENT (1.5" AVERAGE DEPTH)
FRICTION COURSE FC-12.5 (TRAFFIC C) (1.5") (PG 76-22)

Proposed Typical Section – SR 7/US 441 from just south of Rio Grand Avenue to just south of Tivoli Isles Boulevard



Maintenance of Traffic:

- One lane in each direction of SR 806/Atlantic Avenue from SR 7/US 441 to west of Lyons Road is permitted to close nightly from 8:30 p.m. to 7:00 a.m.
- One lane in each direction of SR 806/Atlantic Avenue from Lyons Road to SR 91/Florida's Turnpike entrance ramps is permitted to close nightly from 9:00 p.m. to 7:00 a.m.
- One lane in each direction of SR 7/US 441 from Rio Grande Avenue to Tivoli Isles Boulevard is permitted to close nightly from 8:30 p.m. to 7:00 a.m.
- Motorists and emergency access to businesses and residences will be maintained at all times throughout construction.

Construction Phases

Phase 1

- Construct the roadway and drainage improvements along the east and west sides of SR 7/US 441

Phase 2

- Construct the roadway and drainage improvements along the median on SR 7/US 441

Phase 3

- Mill and resurface SR 7/US 441
- Mill and resurface SR 806/Atlantic Avenue
- Place friction course and final striping

Construction Phases

Phase 4

- Remove traffic separator and construct temporary asphalt for traffic control along SR 806/Atlantic Avenue
- Construct widening in the median and construct temporary asphalt and drainage for traffic control along SR 806/Atlantic Avenue at the intersection with Lyons Road and east of Lyons Road

Phase 5

- Construct the proposed Lake Worth Drainage District (LWDD) L-34 canal and construct the remaining permanent and temporary drainage, sidewalks, curb and gutter, curb cut ramps, driveways, and a portion of the eastbound direction along SR 806/Atlantic Avenue

Construction Phases

Phase 6

- Construct permanent and temporary drainage, sidewalks, curb and gutter, curb cut ramps, driveways and travel lanes along westbound SR 806/Atlantic Avenue and Smith Sundry Road

Phase 7

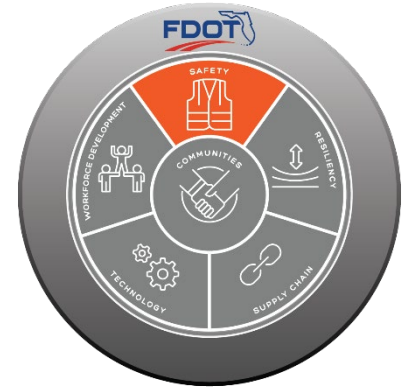
- Construct the median and inside lanes of SR 806/Atlantic Avenue

Phase 8

- Mill, repave and place final striping on SR 806/Atlantic Avenue

Safety and Local Coordination

- **Public Safety is our Top Priority!**
 - **Work Zone Signage & Maintenance of Traffic**
 - Advanced warning and project signage will be placed throughout the construction corridor to alert the traveling public
 - **Local Agency & Stakeholder Coordination**
 - The project team will continue working closely with local stakeholders including local municipalities, schools, neighborhoods and other local agencies to ensure safety standards are met and impacts to the public are minimized in any way possible
 - **Emergency vehicles will be provided access at all times**

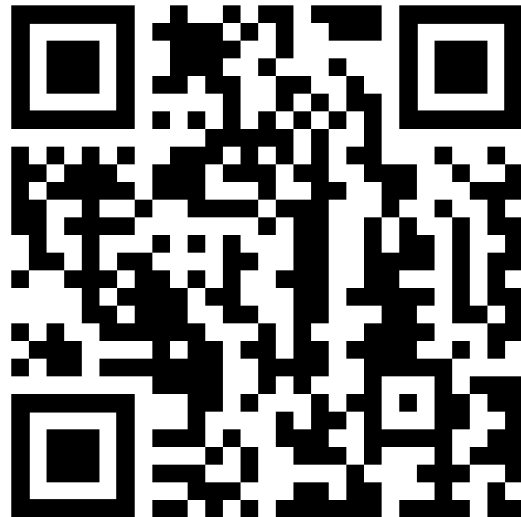


Lighted Message Board

Community Outreach

- To receive project-specific updates please email mreading@corrado.com to be added to the distribution list
- A weekly press release will be distributed every Friday
- Additional project-specific information can be found on the website

****All project updates will be posted to the District Four website.****

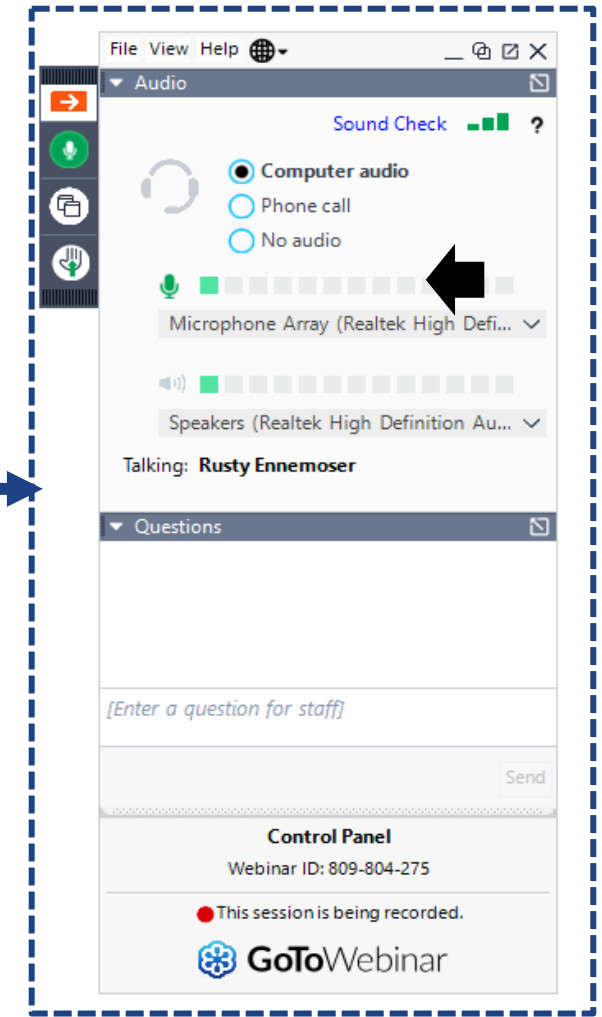


Scan this QR code to go to the District Four Website.

www.d4fdot.com

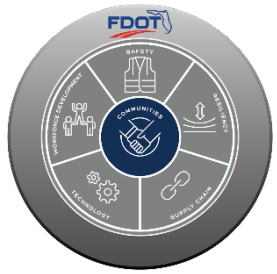
Questions and Answers

- Attendees are welcome to submit questions/comments using the GoTo Webinar Question Panel



Contact Us

Throughout the project, questions or comments can be submitted via email or phone.



Melissa Reading
Community Outreach Specialist



mreading@corrardino.com



(772) 577-8803

Chris Charvat
Project Administrator



ccharvat@eismanrusso.com



(954) 275-8327

Ricky Estripeaut, P.E.
FDOT Project Manager



ricky.estripeaut@dot.state.fl.us



(561) 531-2884

***This PowerPoint
presentation has been
uploaded to GoTo Webinar
for download.***

FDOT Safety Message

MOVE OVER

flhsmv.gov/moveover

FLHSMV

The graphic is split into two vertical panels. The left panel features a black and white Florida State Trooper car with 'STATE TROOPER' and 'FHP' written on it, positioned in front of a white pentagonal sign that contains a road scene. Below the car, the words 'MOVE OVER' are written in large, bold, white letters, flanked by two yellow double-headed arrows. Underneath this, a white pentagonal sign contains a road with a dashed yellow center line. At the bottom of the left panel, the website 'flhsmv.gov/moveover' is written in yellow and white, followed by the 'FLHSMV' text and the Florida Highway Patrol logo. The right panel is a top-down view of a two-lane road. The left lane has a dashed white center line. Several blue cars are in this lane. A yellow line indicates a car moving from the left lane to the right lane. The right lane has a solid white center line and contains a red car, a blue car, and a white car. Three yellow arrows point from the left lane towards the right lane, indicating the direction of the 'move over' maneuver.



**Thank you for attending today's
Virtual Public Meeting!**